



People's Association



YOUR Neighbourly WELCOME GUIDE

LET'S EXPLORE
Sengkang GRC



Singapore Together is about the Government working with Singaporeans, and Singaporeans working with one another, to build our future Singapore. The Government will open up more partnership opportunities for Singaporeans to participate. The Government also hopes to support more citizen-led efforts. Whatever our background or interests, we can each step forward to contribute in areas that we care about. By working together, we can turn diversity into strength and transform challenges into opportunities, to build a Singapore that present and future generations of Singaporeans will be proud of.



No part of this guidebook may be reproduced without the written permission of People's Association. All rights reserved.

Photo Disclaimer:
Several photographs in this book were taken during the pre-COVID-19 period.

Copyright © 2022 by People's Association.
All information is correct at time of publication (June 2022).

My Neighbourhood, My Home!

Singapore is a multi-racial society that celebrates the diversity and vibrancy of different cultures, ethnicities and religions. What better way to discover the gastronomical cuisines, heritage and architectural landmarks and recreational activities than to start with a leisurely stroll around your neighbourhood. An initiative of the People's Association, "Your Neighbourly Welcome Guide" contains colourful anecdotes and well-kept secrets from residents and volunteers. These unique stories of places, activities and experiences are happening right in your neighbourhood.

Discover Sengkang GRC and other neighbourhoods through the e-guides here:



Welcome to Our Neighbourhood!

P07 Food Hunt

- Discover hidden neighbourhood food gems
- Delight in an eclectic mix of Asian and Western cuisines at Essen
- Other affordable local delights and more!

P09 Tracing Our Roots

- Visit the eco-friendly Masjid Al-Mawaddah
- Admire the South Hindu architecture of Argulmigu Velmurugan Gnanamuneeswarar Temple
- Visit the prominent St. Anne's Church, dedicated to a Saint and more!

P13 Exploring Art

- The marine-themed Sengkang Sculpture Park
- The Soaring Vision Sculpture at Sengkang Riverside Park
- Frolic at the Giant Mangosteen Pavilion & Oranges benches and more!

P15 Fun In The Sun

- The family-friendly Compassvale Ancilla Park
- Experience the tranquillity of Sengkang Riverside Park
- The scenic Sengkang Floating Wetland and more!

P19 Connect With Your Community

- The community node at Sengkang Riverside Viewing Gallery
- Community garden at Compassvale Plains Residents' Network

P21 Be A Part Of The Community

- Project Saviours of Sengkang (S.O.S)
- Participate in a mass Pongal
- Ramadan Porridge Distribution and more!

P23 People Of The Neighbourhood

- The Veteran Grassroots Leader
- The Ever-learning Grassroots Leader
- The Dedicated Grassroots Leader
- The Esteemed Grassroots Leader



MORE ABOUT SINGAPORE



FOOD PARADISE

Ask almost anyone, and they will tell you eating is one of our favourite things to do! Our multicultural identity has opened us to the wide variety of cuisines and culinary trends. A definite treat for your taste buds, experience the richness of our different spices, coconut and pandan as you chew into our flavourful local delights which you can find around the corner.



FESTIVALS & CULTURES

As a vibrant cityscape with many cultures, Singapore has many festivals and events for everyone to join. People from all different racial and cultural backgrounds can enjoy exciting festivals like the Chingay festival, Thaipusam, Deepavali, Hari Raya Puasa and Mid-Autumn festival.



THE OLD & THE NEW

Old shophouses amidst shiny new skyscrapers. In Singapore, one way we keep our history alive is through active conservation. A lot of the old houses, shophouses and places of significance have been preserved to remind us of our roots. Some of these places are where early immigrants lived or worked. While exploring our neighbourhoods, you will find charming old-school places woven into our cosmopolitan lifestyle and given new lives as eateries, shops, or other indulgences.

Experience a slice of Singapore right in your neighbourhood! Discover an eclectic mix of food, heritage, shopping, culture and more right at your doorstep and mingle with people in your neighbourhood through fun-filled workshops and events.

#yourneighbourlywelcomeguide

Anchorvale Street



Explore Sengkang GRC

As one of the newest towns in Singapore, Sengkang has some of the newest facilities and amenities. Besides a variety of food options, the neighbourhood is also peppered by the vibrancy of different places of worship and pockets of nature.

INTRODUCING SENGKANG GRC

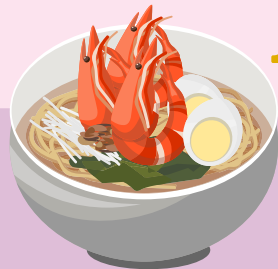


FROM FISHING PORT TO NEW-AGE TOWN

📍 Sengkang GRC

Sengkang was formerly a fishing port and previously known as Kangkar meaning 'foot of the port'. Back in the day, the area was burgeoning with rubber, pepper and pineapple plantations. Today, Sengkang is one of the newest towns in Singapore buzzing with new developments.

FOOD HUNT



From savoury dishes to sweet snacks or desserts, a plethora of food options awaits the adventurous foodie. Explore a variety of local eats right in your neighbourhood today!

KEEP OUR TABLES CLEAN

In Singapore, it's mandatory for diners to return their trays and clear their tables in hawker centres, coffeeshops and food courts. Let's keep our public dining places clean together!



1
PI12 FOOD PARADISE
📍 205D Compassvale Lane

Home to a variety of cuisines, this food court promises a variety that will suit any palate, while being pocket-friendly. Treat yourself to chewy Prata or piping hot prawn noodles!

2
ANCHORVALE 303 FOOD COURT
📍 303 Anchorvale Link

From Min Jiang Kueh (pancakes), seafood white beehoon, to Wonton noodles, this food court is a convenient destination to quell your hunger. Don't forget to delight yourself in the delectable Char Kway Teow at this food court.

3
HAPPY HAWKERS
📍 267 Compassvale Link

With a whole range of local cuisines, this coffeshop offers affordable food options without compromising on variety. Relish in the tangy Wonton noodles or Japanese-Western fusion rice bowls!

4
ESSEN @ THE ANCHORVALE
📍 59 Anchorvale Road

Essen is a food hall offering an eclectic mix of Asian and Western cuisines, as well as alcoholic drinks. Enjoy pizza, steak, dim sum or gelato at the atmospheric indoor or alfresco dining areas!

5
LEPAK ONE CORNER BY YASSIN KAMPUNG
📍 326 Anchorvale Road

With its specialised offering of halal Malay and Chinese cuisine, diners can enjoy a meal in a cosy space surrounded by interior designs mimicking the early kampong days of Singapore.

6
KOPITIAM SQUARE
📍 10 Sengkang Square

Kopitiam Square is a hub with a diverse range of food options. From Yakitori, Bento to Taiwanese snacks and bubble tea, this food court promises to satisfy just any appetite.

TRACING OUR ROOTS

Our neighbourhoods are rich with heritage and history. Take a walk down the streets and you will find historical places and conserved architecture, each with a story to tell.

1



LET'S BE CONSIDERATE



When visiting various heritage sites, refrain from making too much noise out of respect. Together, let's create a pleasant experience of our cultural heritage!

1

MASJID AL-MAWADDAH

151 Compassvale Bow

This mosque boasts of its environmentally-friendly features. Built to cater to the growing demographic of young families in the neighbourhood, this mosque is also fitted with family-friendly features for the young and the old.

2

CHEE HWAN KOG TEMPLE

67 Anchorvale Link

The temple came from humble beginnings. First located on the 3rd floor of a shophouse on 12 Carpenter Street, the temple relocated several times and expanded over the years. It eventually moved to Sengkang in 2001.

3

NANYANG THONG HONG SIANG TNG TEMPLE

63 Anchorvale Walk

The origins of the temple can be dated all the way back to the 1930s. The statue of a deity was originally transported to a village in the Thomson area. Officially founded in 1937 at Killiney Road, the temple has relocated multiple times before settling at the current location in 2002.

4

PU TI BUDDHIST TEMPLE

121C Punggol Road

Nestled within the neighbourhood, Pu Ti Buddhist Temple draws many devotees among the community. Admire the magnificent temple structures and the two statues guarding the temple entrance.



3



4

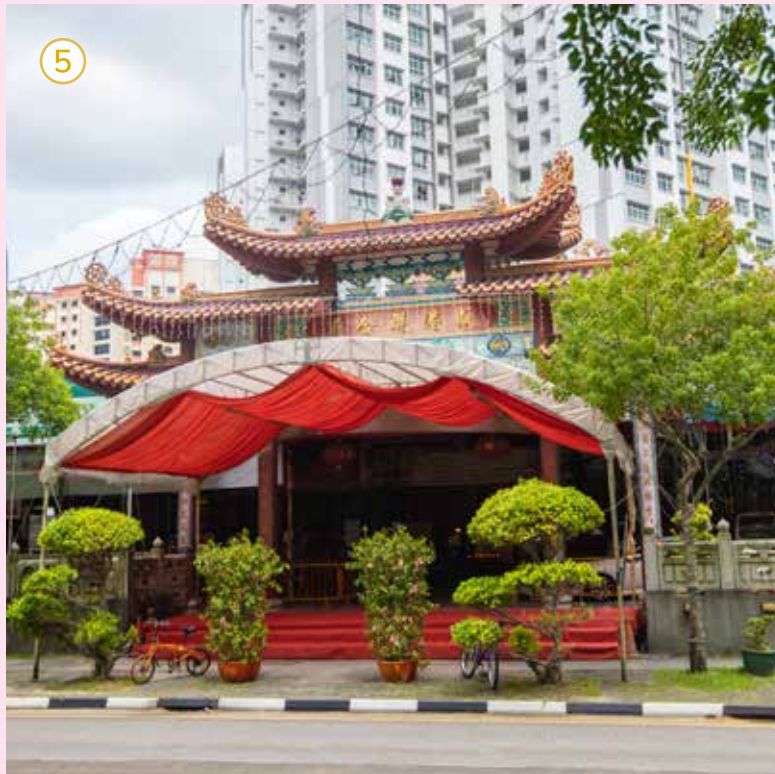


5

CHONG GHEE TEMPLE

📍 80 Rivervale Crescent

This Taoist temple was founded before World War II in a kampong in the present-day Sengkang area. Subsequently, the temple was relocated to Pulau Ubin before moving back to Sengkang between 1980s and 1990s. Today, it offers subsidised traditional Chinese Medicine consultation and tuition classes to residents.



6

ARULMIGU VELMURUGAN GNANAMUNESWARAR TEMPLE

📍 50 Rivervale Crescent

This unique temple fuses the unique features of South Hindu temple architecture with its ornately designed carved images and motifs. In the late 1940s, the temple was initially a refuge for early Indian settlers in the Seletar and Jalan Kayu areas. The building today at Sengkang came to be only because of the devotees' unrelenting efforts at fundraising.



7

CHONG HUA TONG TOU TECK HWEE

📍 60 Rivervale Crescent

This temple promotes the teachings of Confucianism which aids in uplifting individual character to build a harmonious society. As a religious organisation, it has also served in the community, such as helping the elderly. The white building is admired for its beautiful double roof eaves which housed the halls.



8

SENGKANG METHODIST CHURCH

📍 31 Anchorvale Road

Established in 2000, Sengkang Methodist Church has been playing an important role in the community by organising food blessing and Oikos Tuition programmes for the residents in Sengkang.



9

PUAT JIT BUDDHIST TEMPLE

📍 61 Anchorvale Link

The temple's history traces back to the 1950s when it was still located at Lorong Buangkok serving the residents living in the vicinity. Today, the building in its new site is a living testament to the dedication of the believers who fundraised for its construction.



10

ST ANNE'S CHURCH

📍 66 Sengkang East Way

The late priest, Reverend Father Hippolyte Berthold bought a plot of land in Sengkang to serve the growing number of Catholics living in the area. The Church was dedicated after Saint Anne as the building was completed in July 1963 on St Anne's Feast Day.



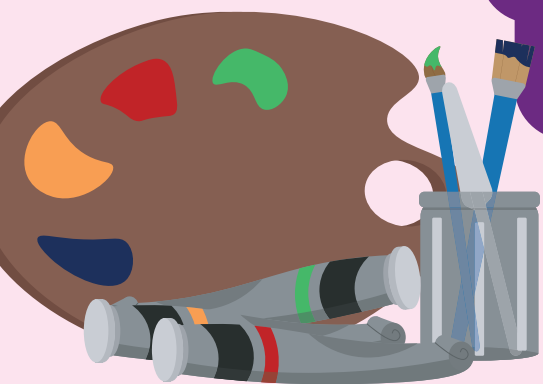
EXPLORING ART

Explore our lively streets! From colourful wall art to significant culture-related art activities, catch a glimpse of our vibrant artistic landmarks and murals as you stroll through our neighbourhood.

1



APPRECIATING CREATIVITY



When visiting art exhibitions or viewing murals, be mindful about touching the artwork unless advised. Let's be considerate and respect the dedication it takes for artists to create artworks!

1

SENGKANG SCULPTURE PARK

📍 Between Compassvale Crescent and Sengkang East Way

The sculpture park reinterprets Sengkang's past as a fishing port through creative means. Designed with a variety of colours, the massive sculptures punctuate the neighbourhood with beauty and a way to interact with the neighbourhood's history.

2

MOSAIC MURALS AT COMPASSVALE STREET

📍 From 244-256 Compassvale Street

Harking back to the area's past as a fishing village, void decks have been decorated with mosaic murals of various sea creatures.

3

SOARING VISION SCULPTURE

📍 Sengkang Riverside Park

This particular sculpture tells the story of the progress and aspirations of Singapore. The spirals of the sculpture symbolise the growth of the people working together for a common cause.

4

GIANT MANGOSTEEN PAVILION & ORANGES BENCHES

📍 Sengkang Floating Wetland

Found in the second-largest man-made wetland in Singapore, these massive fixtures meld function and aesthetics. With its eye-catching colour, they infuse the space with cheer and playfulness.

2



3



4



FUN IN THE SUN

If you prefer to be out and about, working out in green spaces or just taking leisurely walks, add these outdoor neighbourhood spaces to your list for your next day out in the sun.



FOOTPATH COURTESY



Remember that we share a common footpath. If you are a cyclist, please give way to pedestrians and ring your bell politely in advance to alert them if needed.

1 COMPASSVALE ANCILLA PARK

📍 Along Sengkang East Ave or Sengkang Central

Amidst the lush greenery of Sengkang is a lovely park for families. It provides jogging tracks, dedicated elderly and adult fitness corners, as well as playgrounds for children and toddlers!

2 SENGKANG RIVERSIDE PARK

📍 Anchorvale Street abutting Sungei Punggol

This constructed wetland is home to rich biodiversity. Visitors can choose to hike on the many trails to get close to the wildlife of the marshes, take up birdwatching or explore the fruit trees in the park.

3 SENGKANG FLOATING WETLAND

📍 Along Punggol Park Connector

This floating wetland is the second-largest man-made wetland in Singapore! While improving the water quality, it is also a natural habitat for birds and fishes. This place is perfect for unwinding and ending your day!

4 SUNGEI SERANGOON PARK CONNECTOR

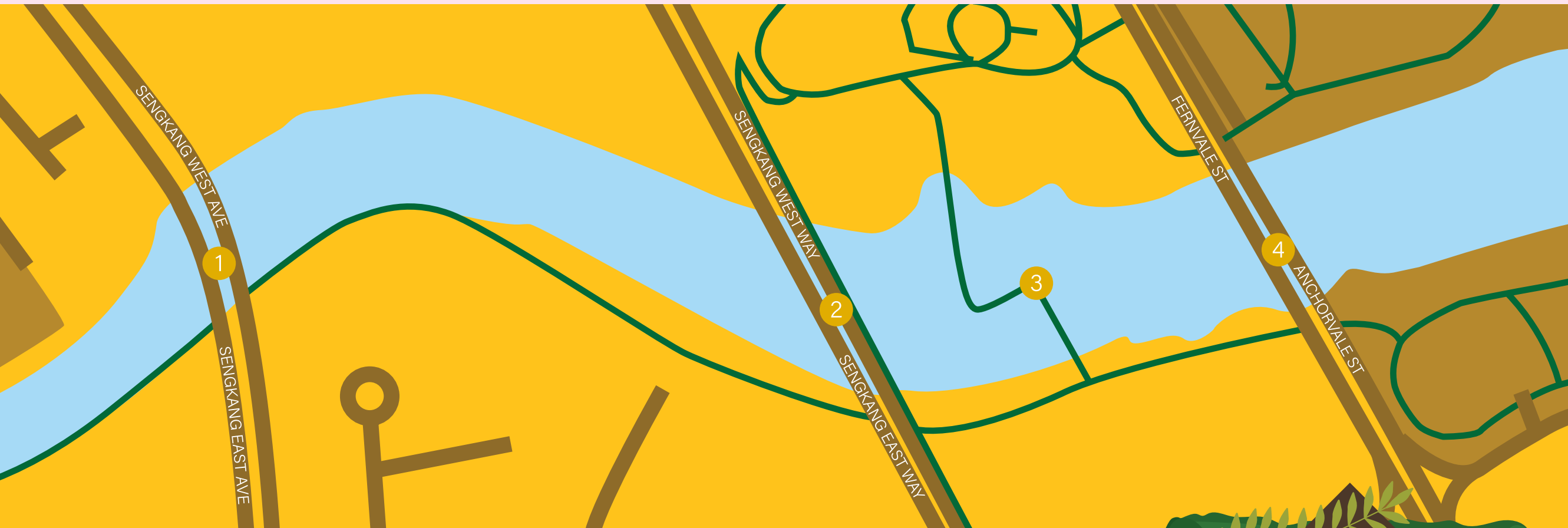
📍 Runs along Sengkang East Drive

Connecting Punggol Park and Punggol Promenade with aesthetically pleasing bioswale (shallow vegetated troughs with bio-retention systems installed at the base), this park connector is a crowd favourite.



A LEISURELY STROLL

Follow this route to discover some interesting outdoor places in our neighbourhood!



1 SENGKANG WEST BRIDGE

Begin your jaunt along Sungei Punggol from Sengkang West Bridge, with views of the surrounding residential estate.



2 SUNGEI PUNGGOL LOOKOUT

At the Sungei Punggol lookout, pause and take in the view of towering HDB blocks foregrounded by nature.



3 WATERS LEARNING TRAIL @ SENGKANG FLOATING WETLAND

Using the self-guided Waters Learning Trail, gain insights on how Sengkang Floating Wetland maintains water quality, biodiversity, as well as the flora and fauna.



4 ANCHORVALE BRIDGE

Cap off your journey along the river at Anchorvale Bridge. From here, you can choose to explore other sections of Sengkang Riverside Park.

Look out for the Park Connector Network (PCN)!

This path continues into other neighbourhoods through an island-wide greenery network known as the Park Connector Network. Look out for the PCN signages and maps as you navigate your way along the roads, scenic rivers and canals that link you to the major parks. Hop on a bicycle or simply jog along the park connectors!



CONNECT WITH YOUR COMMUNITY



Immerse in the culture and buzz of your neighbourhood. Take the first step to say hello to your friendly neighbours and you might even gain a few buddies along the way.

SENGKANG RIVERSIDE VIEWING GALLERY

📍 Sengkang Riverside Park

Sengkang Riverside Gallery is a community facility that faces Sungei Punggol River and Sengkang Riverside Park. It is a node for many activities held by Anchorvale CC. The open-air viewing deck is a popular spot for viewing fireworks during year-end countdowns.

Conveniently located at the park connector behind Anchorvale CC, the viewing gallery is an excellent spot to catch the sunset, meet other community members and unwind after a long day.



COMMUNITY GARDEN AT COMPASSVALE PLAINS RESIDENTS' NETWORK

📍 237 Compassvale Walk

The community garden is managed by a group of volunteers from Compassvale Plains Residents' Network and has served as a meeting point for residents of all ages. It has won various accolades such as the Community In Bloom 2018 Platinum Award organised by NParks.



The garden has recently gone through an extension and the additional area will help foster more community bonding and social cohesion among residents. If you are in the vicinity, do drop by and admire the edible plants in the garden.

BE A PART OF THE COMMUNITY

Connect with your community as you get to know people from all walks of life. Make like-minded friends and pick up new skills through fun-filled activities. A neighbourhood is not just about the places, it is also about the people.

HARI RAYA HAJI CELEBRATION



Every year, Anchorvale CC Malay Activity Executive Committee (MAEC) invites the less privileged residents in the community to join the Hari Raya Haji celebration.

Visit Anchorvale CC for more information.

PROJECT SAVIOURS OF SENGKANG (S.O.S)



Annually, volunteers work with various religious organisations and stakeholders to assist the low-income residents living in the rental flats in Sengkang West.

Visit Anchorvale CC for more information.

CHINESE NEW YEAR CELEBRATION



Residents of all races and religions are welcome to join in to celebrate Chinese New Year over dinner and performances at Rivervale Community Club.

Visit Rivervale CC for more information.

PONGAL



Organised by Rivervale CC Indian Activity Executive Committee (IAEC), residents get to prepare a traditional dish called 'Pongal (Sweet rice)' at a mass Pongal.

Visit Rivervale CC for more information.

MID-AUTUMN FESTIVAL



Every year, volunteers organise local celebrations and lantern processions for the residents to enjoy during the Mid-Autumn Festival.

Visit Sengkang CC for more information.

RAMADAN PORRIDGE DISTRIBUTION

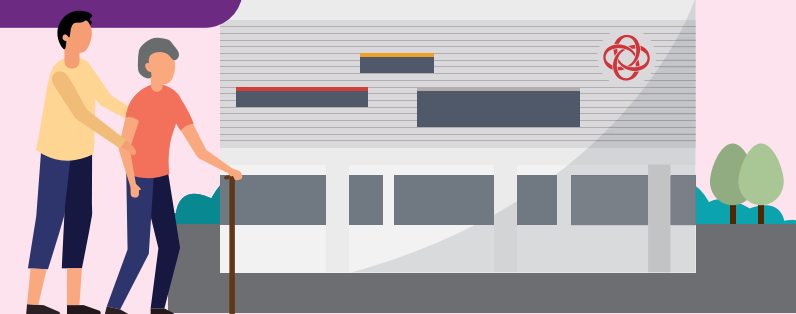


Together with Sengkang CC Malay Activity Executive Committee (MAEC), volunteers can help distribute Ramadan porridge to engage Muslims during the fasting month.

Visit Sengkang CC for more information.

STEP FORWARD TO VOLUNTEER

Keep a lookout for volunteering opportunities in your neighbourhood today! Join an initiative and lend a helping hand. Together, we can make our neighbourhood a better place for everyone!



PEOPLE OF THE NEIGHBOURHOOD

Get to know your neighbours through their tales and experience the neighbourhood through their eyes. As you explore the neighbourhood and participate in community activities, you may just bump into one of them. When you do, don't be shy, say hi!

MEET Mr Dilwant Singh, PBM THE VETERAN GRASSROOTS LEADER

Dilwant Singh is a committed volunteer who has been serving in several Grassroots Organisations (GROs) during his 31 years of grassroots service. He holds various key positions in several GROs and possesses great empathy towards helping his residents. As a committed community leader, Dilwant leads his fellow residents in helping others, specially through mentoring and coaching fellow volunteers.

To Dilwant, the community development of his neighbourhood is a high priority and he strives to improve the lives of the residents.



MEET Ms Alice Ow THE DEDICATED GRASSROOTS LEADER

Alice Ow is an active volunteer who has been serving the community for over 7 years. She has been involved in many Grassroots Organisations (GROs) these years. Despite the level of commitment required, she would go the extra mile to help residents staying within her estate. As a result, she is a well-known figure among her residents who turn to her when they need assistance.

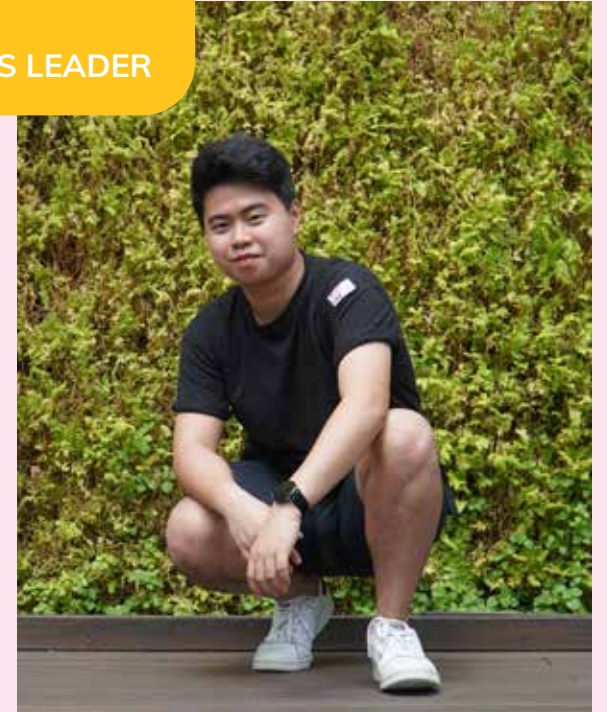
One of the many notable contributions includes volunteering as a Safe Distancing Ambassador (SDA) during the peak of Covid-19 to ensure that the community remains safe and secure for all.



MEET Mr Xavier Ang THE EVER-LEARNING GRASSROOTS LEADER

Xavier Ang is a passionate and active volunteer in the community since 2015. As the Vice Chairperson of Rivervale Court Residents' Committee Youth Committee (RCYC) and Digital Media, and publicity in-charge for the Sengkang East Youth Network (YN), he has been tirelessly organising community events, such as a youth carnival, National Day Observant Ceremony, Halloween and Christmas event for his fellow residents.

A key highlight in his years of volunteering was a campfire he organised back in 2016, where participants set up their own campfires and bonded with one another. For him, volunteering is about learning: "Step out of their comfort zone and you will explore a different side of yourself."



MEET Mr Shariffudin Bin Hassan THE ESTEEMED GRASSROOTS LEADER

Shariffudin has been serving in the Grassroots Community for over 20 years. Well-respected in the Malay Muslim circle and a veteran member in the local mosque committee, he has done various contributions to better the local community. Sharif is currently serving as the Sengkang CC Malay Activity Executive Committee (MAEC) Chairman. He has brought in various programmes and talented individuals to the community. One such programme which he had fronted was the distribution of Porridge for breaking of fast during 'Ramadan', an Islamic fasting month.

Apart from the above, he also organised various educational talks during Hari Raya celebrations and even the Hari Raya decoration contest. Overall, Sharif is well-liked for his good and helpful nature. He is thankful to have a strong team of like-minded volunteers who worked closely with him.



DIGITAL SERVICES

Stay updated on Singapore's digital services with these mobile applications and websites.



MOBILE APPS

EAPPT@ICA

This ICA mobile app allows you to:

- Book an appointment with ICA to complete your application processes
- View existing appointments at the appointments tab
- Locate SingPost outlets for collection of ICA certificates

MYENV

This weather and environment app:

- Provides you with location-based weather information
- Allows you to call NEA
- Make a report to NEA attaching photos and videos

MYTRANSPORT.SG

This transport mobile app allows you to:

- Access your frequently used bus information and traffic services
- Manage push notifications to receive MRT or road alerts
- Plan your trip with different transport options

NLB MOBILE

The library service allows you to:

- Set up multiple user profiles and borrow library materials (e-books)
- Pay fees online
- View loan and reservation items
- View events happening at libraries

ONESERVICE

This government app allows you to report the following issues in your neighbourhood:

- Cleanliness issues
- Maintenance of roads and footpaths
- Water supply and drains issues
- Pest related issues
- Horticultural issues
- Animal related issues

PARKING.SG

This parking app allows you to:

- Calculate parking fees
- Pay for parking online items
- Make changes to your parking sessions

PAYNOW

This banking app allows you to:

- Transfer money instantly and with ease just by using phone number or NRIC

SGSECURE

This SGSecure app allows you to:

- Receive broadcast messages during an emergency
- Locate the nearest AED in your vicinity
- Send information and files to authorities in an emergency situation

WIRELESS@SGX

The Wireless@SGx app allows you to:

- Automatically connect your device to Wireless@SGx network
- Locate the Wireless@SGx spots on an interactive map
- Run diagnostics that can help improve the network
- Receive important updates

WEBSITES

COMMUNITY

People's Association (PA)
www.pa.gov.sg

Ministry of Culture, Community and Youth
www.mccy.gov.sg

Ministry of Social and Family Development
www.msf.gov.sg

Singapore Together
www.sg

EDUCATION

Ministry of Education (MOE)
www.moe.gov.sg

IMMIGRATION

Immigration & Checkpoints Authority (ICA)
www.ica.gov.sg

LABOUR

Ministry of Manpower (MOM)
www.mom.gov.sg

POSTAL

SingPost
www.singpost.com

PUBLIC HOUSING

Housing and Development Board (HDB)
www.hdb.gov.sg

Town Councils
www.towncouncils.sg

TAX

Inland Revenue Authority of Singapore (IRAS)
www.iras.gov.sg

TRANSPORT

Land Transport Authority (LTA)
www.lta.gov.sg

TransitLink
www.transitlink.com.sg



WELCOME TO OUR NEIGHBOURHOOD

Next to 259A Compassvale Road

NEIGHBOURHOOD POLICE CENTRE

📍 Sengkang Neighbourhood Police Centre

Address: 2 Sengkang Square, Sengkang Community Hub, #01-02, S545025
Tel: 1800 343 8999

SINGAPORE POST OFFICE

📍 Sengkang Central Branch

Address: 2 Sengkang Square #03-01 Sengkang Community Hub, S545025

TOWN COUNCIL OFFICE

📍 Sengkang Town Council (Main Office)

Address: 266 Compassvale Bow, #01-06, S540266
Tel: 6590 9700

📍 Sengkang Town Council (Branch Office)

Address: 156A Rivervale Crescent, #01-01, S541156
Tel: 6590 9700

POLYCLINIC & HOSPITAL

📍 Sengkang General Hospital

Address: 110 Sengkang East Way, S544886

📍 Sengkang Polyclinic

Address: 2 Sengkang Square #01-06, Sengkang Community Hub, S545025

HDB BRANCH OFFICE

📍 HDB Sengkang Branch

Address: 118 Rivervale Drive, #02-01, Rivervale Plaza S540118

COMMUNITY LIBRARY

📍 Sengkang Public Library

Address: 1 Sengkang Square, #03-28 & #04-19, Compass One, S545078

OTHERS

📍 Social Service Office (Sengkang Branch)

Address: 261C Sengkang East Way, S543261



WELCOME TO THE NEIGHBOURHOOD!

We hope that you will enjoy our neighbourhood as much as we do. Remember this is just the beginning, there's so much more that awaits you in our friendly neighbourhood!

Our community is always here for you. Reach out to us, we are just a phone call or email away!

Stay abreast of community
integration programmes:
[facebook.com/pa.integration](https://www.facebook.com/pa.integration)

ABOUT PEOPLE'S ASSOCIATION

The People's Association was established on 1 July 1960 to promote racial harmony and social cohesion in Singapore. Our mission is to build and bridge communities in achieving one people, one Singapore.

The People's Association offers a wide range of programmes and volunteering opportunities for Singaporeans from all walks of life through a network of over 2,000 Grassroots Organisations, over 100 Community Clubs, five Community Development Councils, National Community Leadership Institute and Passion Wave.



More information at www.pa.gov.sg

or scan the QR code below:



IMPORTANT INFORMATION

EMERGENCY CONTACTS

Emergency Ambulance and Fire
995

Non-Emergency Ambulance
1777

Police Emergency
999

Police Emergency SMS
(if not possible to call)
71999

Police Hotline (for crime-related information)
1800 255 0000

Fire Hazard Reporting (SCDF)
1800 280 0000

USEFUL CONTACTS

Essential Maintenance Service Unit (for common estate areas)
1800 325 8888 (Buangkok, Compassvale & Rivervale)
1800 241 7711 (Anchorvale)

Building & Construction Authority (to report structural defects in condominiums and non-public housing buildings)
1800 342 5222

General Utilities
1800 778 8888 (SP)
1800 225 5782 (PUB)
1800 752 1800 (City Energy)

Community Mediation Centre (for neighbour disputes)
1800 225 5529

National Environment Agency
6225 5632

Public Utilities Board (to report floods/ drain obstructions)
1800 225 5782

Land Transport Authority (for roads, crossings, bus services/stops)
1800 225 5582

National Parks Board
1800 471 7300

Animal & Veterinary Service
1800 476 1600

COMMUNITY CLUBS

ANCHORVALE

Anchorvale Community Club
Address: 59 Anchorvale Road, S544965
Tel: 6489 4959



Facebook

RIVERVALE

Rivervale Community Club
Address: 2 Rivervale Close, #01-01, S544583
Tel: 6875 5376



Facebook

SENGKANG

Sengkang Community Club
Address: 2 Sengkang Square, #01-01, Sengkang Community Hub, S545025
Tel: 6312 5400



Facebook

